



## LM-79-08 Test Report

For

**Antec Lighting Inc**

(Brand Name:  )

Uniy C, 3979 E Guasti Road, Ontario, CA 91761

**Model name(s):**

**AOK-26WiE-NV-LV2-XX-XX70-T302-P**

**Report Type:** Testing and Report According to IES LM-79-2008  
**Type of Luminaire:** Outdoor Pole/Arm-Mounted Area and Roadway Luminaires  
**Report Date:** 2019-03-20  
Ningbo TengLi Testing Co., Ltd  
**Prepared By:** 2nd floor, Block B, Ningbo Testing and Certification Base,  
No. 66 Qingyi Road, Ningbo National Hi-Tech Zone,  
Ningbo, Zhejiang

Test & Report By:

*Xeon Ren*

Engineer: Xeon Ren

Review By:

*Johnson Sun*

Manager: Johnson Sun

Note: 1. The results contained in this report pertain only to the tested samples  
2. This report does not imply product certification, approval, or endorsement by A2LA, or any agency of the Federal Government.



<b>1.1 Product Information:</b>		
Model Number	AOK-26WiE-NV-LV2-XX-XX70-T302-P	
Remark	The first "XX" can be "00" =no photocontrol or "PH"=photocontrol provided. The second "XX" could be 27/30/35/40/45/50/57 refers to CCT. This is multiple listed report, the Project Number of the original report is JAE190121-C-R1	
Representative (Tested) Model	AOK-26WiE-NV-LV2-00-2770-T302-P	
Model Difference	All construction and rating are the same, except CCT	
SKU (if available)	N/A	
Type of Luminaire (for integral lamps, list base type and lamp type)	Outdoor Pole/Arm-Mounted Area and Roadway Luminaires	
LED Manufacturer	Lumileds	
LED Model	LUXEON V Family	
Dimming	Dimmable	
Sample Number	JAE190121-C1	
Date of Receipt	Feb.23, 2019	
Luminaire Aperture (for downlights)	--	in.
Luminaire Length	--	mm
Luminaires Width	--	mm
Number of Units (modular products)	N/A	s

<b>1.2 Rated Values:</b>	
Rated Voltage / Frequency	100-277Vac, 50/60Hz
Nominal Power	26W
Rated Initial Lamp Lumen	--
Declared CCT	2700K,3000K,3500K,4000K,4500K,5000K, 5700K



### 1.3 Test Specifications:

Test item	<ol style="list-style-type: none"> <li>1. Total Luminous Flux</li> <li>2. Luminous Distribution Intensity</li> <li>3. Luminous Efficacy</li> <li>4. Electrical Parameters</li> </ol>
Reference Standard	<ol style="list-style-type: none"> <li>1. IES LM-79-2008 Electrical and Photometric Measurements of Solid-State Lighting Products</li> <li>2. IESNA TM-16-05 Technical Memorandum on Light Emitting Diode (LED) Sources and Systems</li> </ol>
Reference Work Instruction	QD25

### 1.4 Test Methods

#### 1) Photometric and Light Distribution Measurement – Goniophotometer Method:

Photometric parameters were measured using the goniophotometer and software. The ambient temperature shall be maintained at  $25\text{ }^{\circ}\text{C} \pm 1\text{ }^{\circ}\text{C}$ , measured at a point not more than 1 m from the sample and at the same height as the sample. The sample was operated at 120 or rated Volts AC, 60Hz. It was stabilized before measurement was made. Luminous flux, luminaire efficacy, zonal lumen were calculated from the software taken at  $1\text{ }^{\circ}$  vertical intervals and  $22.5\text{ }^{\circ}$  horizontal intervals.

#### 2) Electrical Measurements:

Electrical parameters were measured using power meters incorporated in goniophotometer or sphere-spectroradiometer system. The ambient temperature surrounding the sample was maintained at  $25\text{ }^{\circ}\text{C} \pm 1\text{ }^{\circ}\text{C}$ . The sample was operated at 120 or rated Volts AC, 60Hz. It was stabilized before measurement was made. Voltage, frequency, current, power, power factor and total harmonic distortion were measured by and read from the power meter.



**2.1 Summary of Test Result**

Criteria Item	Measured Value		Compliance	Requirement (DLC V4.4)	
	2700K				
Power (W)	2700K	120V	27.14	N/A	N/A
		277V	27.51		
Power Factor	2700K	120V	0.9958	Pass	>= 0.9(-3%)
		277V	0.9192		
THD %	2700K	120V	8.88	Pass	<= 20(+5)
		277V	7.58		
Luminous Intensity Distribution	Zonal lumens in the 0-90 °		100	Pass	=100(-1)
	Zonal lumens in the 80-90 °		0.5	Pass	<=10(+3)
Total Luminous	2700K	120V	3447.2	Pass	>=1000(-10%)
		277V	3447.9		
Luminous Efficacy	2700K	120V	127.02	Pass	Standard: >= 90(-3%) Premium: >= 110(-3%)
		277V	125.33		



**2.2 Electrical, Photometric and Chromaticity Measurements**

<b>Test date</b>	2019-02-25	<b>Test Ambient:</b>	25.2 °C
<b>Test Orientation</b>	As intended	<b>Stabilization Time (min)</b>	90
<b>Model Number</b>	AOK-26WiE-NV-LV2-00-2770-T3 02-P		

**Electrical Measurement:**

Sample No.	Voltage (Vac)	Frequency (Hz)	Current (A)	Power (W)	Power Factor	THD %
JAE190121-	120.0	60	0.2271	27.14	0.9958	8.88
C1	277.0	60	0.1080	27.51	0.9192	7.58

**Photometric Measurement – Goniophotometer Method:**

Parameter	Result	
Test Voltage (V)	120.0	277.0
Frequency (Hz)	60	60
Total Luminous (lm)	3447.2	3447.9
Luminous Efficacy (lm/W)	127.02	125.33
Zonal lumens in the 0-90 °	100	--
Zonal lumens in the 80-90 °	0.5	--
Beam Angle ( °)	106.6	--
Center Beam Candle Power (cd)	810	--

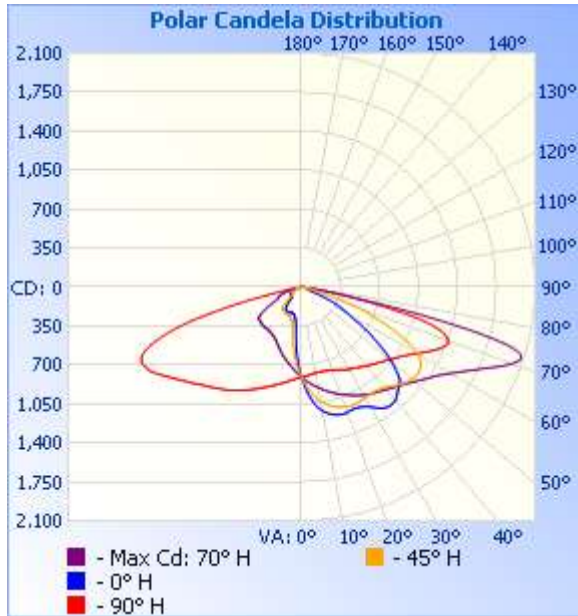


**Zonal Lumen Tabulation**

Zonal Lumen Summary		
Zone	Lumens	% Luminaire
0-30	648.7	18.8%
0-40	1,155.0	33.5%
0-60	2,468.6	71.6%
60-90	978.5	28.4%
70-100	346.3	10%
90-120	0	0%
0-90	3,447.1	100%
90-180	0	0%
0-180	3,447.1	100%

Lumens Per Zone					
Zone	Lumens	% Total	Zone	Lumens	% Total
0-10	74.8	2.2%	90-100	0	0%
10-20	216.0	6.3%	100-110	0	0%
20-30	357.8	10.4%	110-120	0	0%
30-40	506.3	14.7%	120-130	0	0%
40-50	628.9	18.2%	130-140	0	0%
50-60	684.6	19.9%	140-150	0	0%
60-70	632.2	18.3%	150-160	0	0%
70-80	330.7	9.6%	160-170	0	0%
80-90	15.6	0.5%	170-180	0	0%

**Photometric Data**



**Illuminance at a Distance**

	Center Beam fc	Beam Width	
3.3ft	74.4 fc	4.6 ft	16.8 ft
6.6ft	18.6 fc	9.3 ft	33.6 ft
9.9ft	8.3 fc	13.9 ft	50.4 ft
13.2ft	4.6 fc	18.5 ft	67.3 ft
16.5ft	3.0 fc	23.1 ft	84.1 ft
19.8ft	2.1 fc	27.8 ft	100.9 ft

■ Vert. Spread: 70.1°  
■ Horiz. Spread: 137.1°

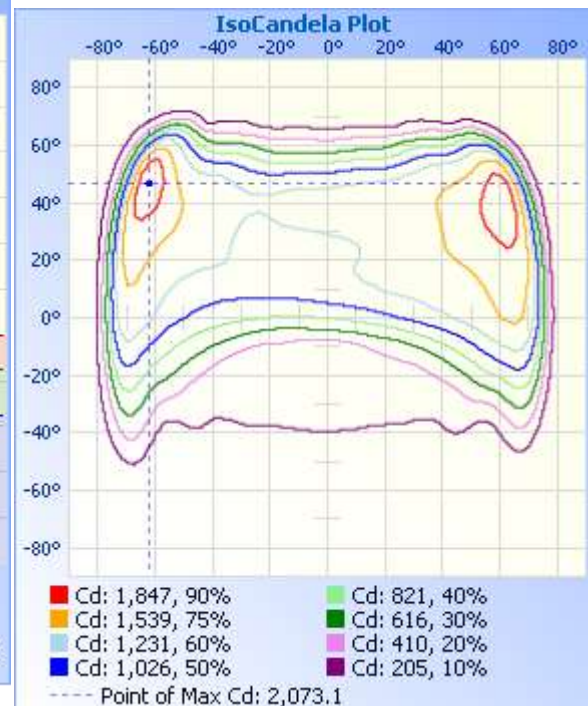
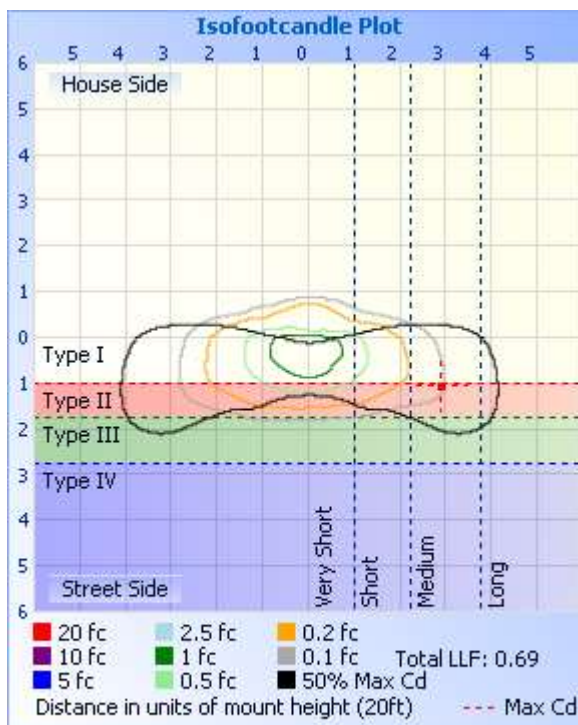






Table--1 UNIT: cd

C (DEG) γ (DEG)	0	5	10	15	20	25	30	35	40	45	50	55	60	65	70	75	80	85	90
0	810	810	810	810	810	810	810	810	810	810	810	810	810	810	810	810	810	810	810
5	833	854	873	891	908	924	939	951	963	973	983	991	997	1003	1007	1010	1011	1012	1013
10	868	910	942	971	1001	1029	1052	1070	1087	1104	1117	1124	1128	1133	1136	1136	1135	1134	1134
15	909	968	1009	1049	1089	1125	1148	1164	1180	1194	1203	1203	1203	1203	1201	1198	1194	1190	1187
20	956	1027	1077	1124	1171	1209	1228	1237	1246	1254	1253	1245	1237	1229	1222	1216	1210	1204	1198
25	1011	1091	1144	1195	1246	1280	1287	1284	1280	1276	1266	1253	1239	1226	1216	1210	1205	1199	1193
30	1067	1151	1205	1258	1311	1339	1332	1313	1294	1276	1268	1264	1259	1254	1250	1248	1246	1244	1241
35	1128	1212	1264	1317	1369	1392	1377	1352	1326	1301	1299	1302	1307	1311	1314	1315	1317	1318	1320
40	1185	1268	1322	1376	1430	1452	1434	1407	1380	1353	1345	1343	1341	1339	1336	1331	1326	1320	1316
45	1247	1330	1386	1442	1497	1519	1499	1471	1443	1416	1393	1371	1351	1330	1311	1294	1277	1260	1243
50	1326	1409	1468	1525	1582	1601	1575	1541	1508	1474	1420	1364	1309	1255	1210	1175	1140	1104	1069
55	1421	1507	1568	1628	1688	1698	1652	1599	1546	1492	1384	1270	1155	1043	963	917	872	828	784
60	1535	1628	1694	1760	1825	1810	1711	1603	1497	1390	1236	1076	915	755	654	609	569	528	486
65	1589	1708	1802	1897	1987	1931	1719	1494	1273	1058	912	772	630	488	399	365	335	305	277
70	1380	1547	1702	1858	2011	1933	1617	1281	947	622	495	385	272	160	99.7	93.2	90.3	87.0	83.7
75	674	728	780	837	908	871	712	530	336	135	110	98.1	85.6	71.9	64.5	63.0	61.9	60.7	59.5
80	81.7	84.4	84.4	83.8	82.5	78.6	72.3	65.1	56.7	47.4	46.6	46.2	45.5	44.8	43.5	41.7	39.9	38.0	36.1
85	1.71	1.94	2.24	2.58	2.93	3.53	4.43	5.51	6.61	7.73	9.71	11.8	13.7	15.7	16.3	15.6	14.8	14.0	13.1
90	0.00	0.00	0.00	0.00	0.00	0.00	0.00	0.00	0.00	0.00	0.00	0.00	0.00	0.00	0.00	0.00	0.00	0.00	0.00
95	0.00	0.00	0.00	0.00	0.00	0.00	0.00	0.00	0.00	0.00	0.00	0.00	0.00	0.00	0.00	0.00	0.00	0.00	0.00
100	0.00	0.00	0.00	0.00	0.00	0.00	0.00	0.00	0.00	0.00	0.00	0.00	0.00	0.00	0.00	0.00	0.00	0.00	0.00
105	0.00	0.00	0.00	0.00	0.00	0.00	0.00	0.00	0.00	0.00	0.00	0.00	0.00	0.00	0.00	0.00	0.00	0.00	0.00
110	0.00	0.00	0.00	0.00	0.00	0.00	0.00	0.00	0.00	0.00	0.00	0.00	0.00	0.00	0.00	0.00	0.00	0.00	0.00
115	0.00	0.00	0.00	0.00	0.00	0.00	0.00	0.00	0.00	0.00	0.00	0.00	0.00	0.00	0.00	0.00	0.00	0.00	0.00
120	0.00	0.00	0.00	0.00	0.00	0.00	0.00	0.00	0.00	0.00	0.00	0.00	0.00	0.00	0.00	0.00	0.00	0.00	0.00
125	0.00	0.00	0.00	0.00	0.00	0.00	0.00	0.00	0.00	0.00	0.00	0.00	0.00	0.00	0.00	0.00	0.00	0.00	0.00
130	0.00	0.00	0.00	0.00	0.00	0.00	0.00	0.00	0.00	0.00	0.00	0.00	0.00	0.00	0.00	0.00	0.00	0.00	0.00
135	0.00	0.00	0.00	0.00	0.00	0.00	0.00	0.00	0.00	0.00	0.00	0.00	0.00	0.00	0.00	0.00	0.00	0.00	0.00
140	0.00	0.00	0.00	0.00	0.00	0.00	0.00	0.00	0.00	0.00	0.00	0.00	0.00	0.00	0.00	0.00	0.00	0.00	0.00
145	0.00	0.00	0.00	0.00	0.00	0.00	0.00	0.00	0.00	0.00	0.00	0.00	0.00	0.00	0.00	0.00	0.00	0.00	0.00
150	0.00	0.00	0.00	0.00	0.00	0.00	0.00	0.00	0.00	0.00	0.00	0.00	0.00	0.00	0.00	0.00	0.00	0.00	0.00
155	0.00	0.00	0.00	0.00	0.00	0.00	0.00	0.00	0.00	0.00	0.00	0.00	0.00	0.00	0.00	0.00	0.00	0.00	0.00
160	0.00	0.00	0.00	0.00	0.00	0.00	0.00	0.00	0.00	0.00	0.00	0.00	0.00	0.00	0.00	0.00	0.00	0.00	0.00
165	0.00	0.00	0.00	0.00	0.00	0.00	0.00	0.00	0.00	0.00	0.00	0.00	0.00	0.00	0.00	0.00	0.00	0.00	0.00
170	0.00	0.00	0.00	0.00	0.00	0.00	0.00	0.00	0.00	0.00	0.00	0.00	0.00	0.00	0.00	0.00	0.00	0.00	0.00
175	0.00	0.00	0.00	0.00	0.00	0.00	0.00	0.00	0.00	0.00	0.00	0.00	0.00	0.00	0.00	0.00	0.00	0.00	0.00
180	0.00	0.00	0.00	0.00	0.00	0.00	0.00	0.00	0.00	0.00	0.00	0.00	0.00	0.00	0.00	0.00	0.00	0.00	0.00





Table--2 UNIT: ed

C (DEG) γ (DEG)	95	100	105	110	115	120	125	130	135	140	145	150	155	160	165	170	175	180	185
0	810	810	810	810	810	810	810	810	810	810	810	810	810	810	810	810	810	810	810
5	1008	1003	999	993	986	978	969	958	945	932	917	902	885	867	849	830	811	792	772
10	1127	1120	1113	1106	1097	1087	1077	1065	1047	1025	1003	980	952	920	887	854	819	779	738
15	1180	1173	1166	1159	1151	1142	1133	1123	1107	1087	1065	1043	1014	973	929	884	838	780	716
20	1192	1185	1179	1173	1168	1163	1158	1153	1144	1127	1111	1094	1067	1024	971	918	863	791	702
25	1186	1179	1171	1164	1161	1160	1160	1159	1156	1148	1139	1131	1113	1071	1014	956	898	819	709
30	1229	1217	1204	1192	1182	1172	1163	1153	1148	1152	1157	1163	1157	1119	1058	996	934	851	727
35	1304	1289	1273	1257	1237	1211	1185	1160	1143	1157	1172	1187	1191	1157	1093	1029	965	881	747
40	1310	1304	1299	1292	1274	1247	1219	1192	1174	1189	1207	1224	1231	1198	1134	1069	1003	920	777
45	1246	1249	1252	1255	1253	1248	1243	1239	1239	1252	1265	1279	1284	1250	1183	1116	1048	964	812
50	1084	1100	1115	1131	1155	1188	1222	1257	1289	1308	1326	1344	1356	1322	1250	1178	1105	1018	855
55	805	827	848	872	930	1022	1116	1210	1298	1337	1374	1412	1442	1415	1337	1259	1180	1087	908
60	510	533	555	581	662	800	938	1076	1207	1294	1381	1471	1552	1547	1464	1379	1294	1193	972
65	295	314	335	358	430	548	666	783	906	1102	1304	1509	1703	1747	1650	1549	1448	1330	1049
70	87.7	92.1	95.7	102	152	247	340	433	545	882	1231	1583	1920	2012	1867	1718	1567	1405	1098
75	61.1	62.7	64.2	65.9	72.3	84.2	94.2	104	140	534	933	1324	1692	1771	1598	1415	1241	1079	828
80	38.6	41.1	43.5	45.9	47.8	48.9	49.9	50.8	54.8	115	172	225	271	291	290	289	290	285	224
85	14.6	16.1	17.6	19.0	19.1	18.0	16.8	15.6	14.3	13.7	12.9	11.9	10.8	9.50	7.97	6.43	4.94	3.64	3.37
90	0.00	0.00	0.00	0.00	0.00	0.00	0.00	0.00	0.00	0.00	0.00	0.00	0.00	0.00	0.00	0.00	0.00	0.00	0.00
95	0.00	0.00	0.00	0.00	0.00	0.00	0.00	0.00	0.00	0.00	0.00	0.00	0.00	0.00	0.00	0.00	0.00	0.00	0.00
100	0.00	0.00	0.00	0.00	0.00	0.00	0.00	0.00	0.00	0.00	0.00	0.00	0.00	0.00	0.00	0.00	0.00	0.00	0.00
105	0.00	0.00	0.00	0.00	0.00	0.00	0.00	0.00	0.00	0.00	0.00	0.00	0.00	0.00	0.00	0.00	0.00	0.00	0.00
110	0.00	0.00	0.00	0.00	0.00	0.00	0.00	0.00	0.00	0.00	0.00	0.00	0.00	0.00	0.00	0.00	0.00	0.00	0.00
115	0.00	0.00	0.00	0.00	0.00	0.00	0.00	0.00	0.00	0.00	0.00	0.00	0.00	0.00	0.00	0.00	0.00	0.00	0.00
120	0.00	0.00	0.00	0.00	0.00	0.00	0.00	0.00	0.00	0.00	0.00	0.00	0.00	0.00	0.00	0.00	0.00	0.00	0.00
125	0.00	0.00	0.00	0.00	0.00	0.00	0.00	0.00	0.00	0.00	0.00	0.00	0.00	0.00	0.00	0.00	0.00	0.00	0.00
130	0.00	0.00	0.00	0.00	0.00	0.00	0.00	0.00	0.00	0.00	0.00	0.00	0.00	0.00	0.00	0.00	0.00	0.00	0.00
135	0.00	0.00	0.00	0.00	0.00	0.00	0.00	0.00	0.00	0.00	0.00	0.00	0.00	0.00	0.00	0.00	0.00	0.00	0.00
140	0.00	0.00	0.00	0.00	0.00	0.00	0.00	0.00	0.00	0.00	0.00	0.00	0.00	0.00	0.00	0.00	0.00	0.00	0.00
145	0.00	0.00	0.00	0.00	0.00	0.00	0.00	0.00	0.00	0.00	0.00	0.00	0.00	0.00	0.00	0.00	0.00	0.00	0.00
150	0.00	0.00	0.00	0.00	0.00	0.00	0.00	0.00	0.00	0.00	0.00	0.00	0.00	0.00	0.00	0.00	0.00	0.00	0.00
155	0.00	0.00	0.00	0.00	0.00	0.00	0.00	0.00	0.00	0.00	0.00	0.00	0.00	0.00	0.00	0.00	0.00	0.00	0.00
160	0.00	0.00	0.00	0.00	0.00	0.00	0.00	0.00	0.00	0.00	0.00	0.00	0.00	0.00	0.00	0.00	0.00	0.00	0.00
165	0.00	0.00	0.00	0.00	0.00	0.00	0.00	0.00	0.00	0.00	0.00	0.00	0.00	0.00	0.00	0.00	0.00	0.00	0.00
170	0.00	0.00	0.00	0.00	0.00	0.00	0.00	0.00	0.00	0.00	0.00	0.00	0.00	0.00	0.00	0.00	0.00	0.00	0.00
175	0.00	0.00	0.00	0.00	0.00	0.00	0.00	0.00	0.00	0.00	0.00	0.00	0.00	0.00	0.00	0.00	0.00	0.00	0.00
180	0.00	0.00	0.00	0.00	0.00	0.00	0.00	0.00	0.00	0.00	0.00	0.00	0.00	0.00	0.00	0.00	0.00	0.00	0.00



Table--3 UNIT: ed

C (DEG) γ (DEG)	190	195	200	205	210	215	220	225	230	235	240	245	250	255	260	265	270	275	280
0	810	810	810	810	810	810	810	810	810	810	810	810	810	810	810	810	810	810	810
5	752	732	712	693	673	654	637	622	607	593	580	570	562	557	553	549	546	553	560
10	697	655	612	568	523	479	437	408	386	366	346	331	322	319	316	312	309	315	322
15	651	585	525	472	422	373	327	299	288	279	271	264	261	260	260	259	259	261	264
20	612	523	446	395	358	322	288	265	259	255	251	248	247	247	248	249	249	251	252
25	599	489	397	346	320	296	272	256	252	249	246	244	243	244	246	247	248	249	250
30	603	479	374	319	300	282	265	252	250	248	246	244	245	247	249	251	253	253	253
35	613	480	363	304	289	275	262	251	249	247	245	244	244	245	246	247	248	249	249
40	634	492	364	300	286	274	261	249	239	230	219	209	202	198	194	190	186	187	189
45	660	509	371	298	279	261	243	223	202	181	160	141	131	129	129	128	128	127	125
50	691	527	374	283	244	206	167	134	128	124	120	117	116	117	118	119	119	117	115
55	727	547	375	271	226	182	138	100	100	102	103	105	106	106	107	107	108	106	104
60	750	526	311	194	164	137	111	89.3	89.5	90.8	92.1	93.4	94.9	96.5	98.0	99.6	101	98.5	95.8
65	767	484	214	82.4	77.9	76.3	75.0	74.3	76.3	78.4	80.4	82.4	83.0	82.2	81.4	80.7	80.1	79.4	78.8
70	794	491	200	59.8	58.2	58.7	59.1	59.3	58.6	57.8	57.0	56.2	54.7	52.6	50.5	48.5	46.4	47.3	48.1
75	593	363	146	40.9	38.5	37.8	37.1	36.2	32.7	29.1	25.4	21.7	18.7	16.3	14.3	12.0	9.78	11.2	12.6
80	161	102	48.6	22.7	21.6	21.3	21.2	20.8	16.3	11.7	7.08	2.65	0.41	0.23	0.15	0.08	0.00	0.06	0.12
85	2.86	2.33	1.78	1.49	1.51	1.52	1.51	1.41	1.00	0.64	0.39	0.10	0.00	0.00	0.00	0.00	0.00	0.00	0.00
90	0.00	0.00	0.00	0.00	0.00	0.00	0.00	0.00	0.00	0.00	0.00	0.00	0.00	0.00	0.00	0.00	0.00	0.00	0.00
95	0.00	0.00	0.00	0.00	0.00	0.00	0.00	0.00	0.00	0.00	0.00	0.00	0.00	0.00	0.00	0.00	0.00	0.00	0.00
100	0.00	0.00	0.00	0.00	0.00	0.00	0.00	0.00	0.00	0.00	0.00	0.00	0.00	0.00	0.00	0.00	0.00	0.00	0.00
105	0.00	0.00	0.00	0.00	0.00	0.00	0.00	0.00	0.00	0.00	0.00	0.00	0.00	0.00	0.00	0.00	0.00	0.00	0.00
110	0.00	0.00	0.00	0.00	0.00	0.00	0.00	0.00	0.00	0.00	0.00	0.00	0.00	0.00	0.00	0.00	0.00	0.00	0.00
115	0.00	0.00	0.00	0.00	0.00	0.00	0.00	0.00	0.00	0.00	0.00	0.00	0.00	0.00	0.00	0.00	0.00	0.00	0.00
120	0.00	0.00	0.00	0.00	0.00	0.00	0.00	0.00	0.00	0.00	0.00	0.00	0.00	0.00	0.00	0.00	0.00	0.00	0.00
125	0.00	0.00	0.00	0.00	0.00	0.00	0.00	0.00	0.00	0.00	0.00	0.00	0.00	0.00	0.00	0.00	0.00	0.00	0.00
130	0.00	0.00	0.00	0.00	0.00	0.00	0.00	0.00	0.00	0.00	0.00	0.00	0.00	0.00	0.00	0.00	0.00	0.00	0.00
135	0.00	0.00	0.00	0.00	0.00	0.00	0.00	0.00	0.00	0.00	0.00	0.00	0.00	0.00	0.00	0.00	0.00	0.00	0.00
140	0.00	0.00	0.00	0.00	0.00	0.00	0.00	0.00	0.00	0.00	0.00	0.00	0.00	0.00	0.00	0.00	0.00	0.00	0.00
145	0.00	0.00	0.00	0.00	0.00	0.00	0.00	0.00	0.00	0.00	0.00	0.00	0.00	0.00	0.00	0.00	0.00	0.00	0.00
150	0.00	0.00	0.00	0.00	0.00	0.00	0.00	0.00	0.00	0.00	0.00	0.00	0.00	0.00	0.00	0.00	0.00	0.00	0.00
155	0.00	0.00	0.00	0.00	0.00	0.00	0.00	0.00	0.00	0.00	0.00	0.00	0.00	0.00	0.00	0.00	0.00	0.00	0.00
160	0.00	0.00	0.00	0.00	0.00	0.00	0.00	0.00	0.00	0.00	0.00	0.00	0.00	0.00	0.00	0.00	0.00	0.00	0.00
165	0.00	0.00	0.00	0.00	0.00	0.00	0.00	0.00	0.00	0.00	0.00	0.00	0.00	0.00	0.00	0.00	0.00	0.00	0.00
170	0.00	0.00	0.00	0.00	0.00	0.00	0.00	0.00	0.00	0.00	0.00	0.00	0.00	0.00	0.00	0.00	0.00	0.00	0.00
175	0.00	0.00	0.00	0.00	0.00	0.00	0.00	0.00	0.00	0.00	0.00	0.00	0.00	0.00	0.00	0.00	0.00	0.00	0.00
180	0.00	0.00	0.00	0.00	0.00	0.00	0.00	0.00	0.00	0.00	0.00	0.00	0.00	0.00	0.00	0.00	0.00	0.00	0.00



Table--4 UNIT: ed

C (DEG) γ (DEG)	285	290	295	300	305	310	315	320	325	330	335	340	345	350	355			
0	810	810	810	810	810	810	810	810	810	810	810	810	810	810	810			
5	567	576	587	600	615	632	649	666	685	706	727	748	769	791	812			
10	328	335	348	371	399	428	459	495	543	593	642	691	737	781	825			
15	267	270	277	289	302	316	334	374	436	503	571	638	707	775	842			
20	254	256	260	267	274	282	292	332	390	451	514	584	672	767	862			
25	251	252	255	260	266	272	280	315	363	413	464	537	645	767	889			
30	252	252	254	258	262	267	273	304	344	386	429	507	633	778	923			
35	250	251	253	256	260	264	269	297	332	369	406	490	637	800	964			
40	191	193	202	216	232	247	263	293	326	360	395	486	649	827	1006			
45	124	123	131	148	165	184	204	245	291	336	382	488	666	860	1054			
50	113	111	110	109	109	109	112	166	229	292	356	483	685	899	1113			
55	102	101	98.7	96.8	94.9	92.9	93.0	144	204	264	326	467	697	940	1181			
60	93.0	90.4	88.0	85.9	83.9	81.9	81.1	103	128	156	187	340	630	933	1235			
65	78.3	77.8	76.4	74.0	71.6	69.2	66.8	67.8	69.3	70.9	75.8	233	558	901	1245			
70	49.1	50.1	50.8	51.2	51.6	52.0	52.4	52.6	52.9	53.1	55.3	191	474	771	1073			
75	13.8	15.3	17.7	20.8	24.1	27.3	30.4	31.5	32.5	33.5	35.5	97.9	228	369	518			
80	0.18	0.32	2.16	5.82	9.57	13.4	17.1	16.8	16.3	15.9	15.7	21.4	34.1	48.8	65.1			
85	0.00	0.00	0.01	0.04	0.06	0.10	0.16	0.21	0.26	0.29	0.30	0.48	0.79	1.10	1.41			
90	0.00	0.00	0.00	0.00	0.00	0.00	0.00	0.00	0.00	0.00	0.00	0.00	0.00	0.00	0.00			
95	0.00	0.00	0.00	0.00	0.00	0.00	0.00	0.00	0.00	0.00	0.00	0.00	0.00	0.00	0.00			
100	0.00	0.00	0.00	0.00	0.00	0.00	0.00	0.00	0.00	0.00	0.00	0.00	0.00	0.00	0.00			
105	0.00	0.00	0.00	0.00	0.00	0.00	0.00	0.00	0.00	0.00	0.00	0.00	0.00	0.00	0.00			
110	0.00	0.00	0.00	0.00	0.00	0.00	0.00	0.00	0.00	0.00	0.00	0.00	0.00	0.00	0.00			
115	0.00	0.00	0.00	0.00	0.00	0.00	0.00	0.00	0.00	0.00	0.00	0.00	0.00	0.00	0.00			
120	0.00	0.00	0.00	0.00	0.00	0.00	0.00	0.00	0.00	0.00	0.00	0.00	0.00	0.00	0.00			
125	0.00	0.00	0.00	0.00	0.00	0.00	0.00	0.00	0.00	0.00	0.00	0.00	0.00	0.00	0.00			
130	0.00	0.00	0.00	0.00	0.00	0.00	0.00	0.00	0.00	0.00	0.00	0.00	0.00	0.00	0.00			
135	0.00	0.00	0.00	0.00	0.00	0.00	0.00	0.00	0.00	0.00	0.00	0.00	0.00	0.00	0.00			
140	0.00	0.00	0.00	0.00	0.00	0.00	0.00	0.00	0.00	0.00	0.00	0.00	0.00	0.00	0.00			
145	0.00	0.00	0.00	0.00	0.00	0.00	0.00	0.00	0.00	0.00	0.00	0.00	0.00	0.00	0.00			
150	0.00	0.00	0.00	0.00	0.00	0.00	0.00	0.00	0.00	0.00	0.00	0.00	0.00	0.00	0.00			
155	0.00	0.00	0.00	0.00	0.00	0.00	0.00	0.00	0.00	0.00	0.00	0.00	0.00	0.00	0.00			
160	0.00	0.00	0.00	0.00	0.00	0.00	0.00	0.00	0.00	0.00	0.00	0.00	0.00	0.00	0.00			
165	0.00	0.00	0.00	0.00	0.00	0.00	0.00	0.00	0.00	0.00	0.00	0.00	0.00	0.00	0.00			
170	0.00	0.00	0.00	0.00	0.00	0.00	0.00	0.00	0.00	0.00	0.00	0.00	0.00	0.00	0.00			
175	0.00	0.00	0.00	0.00	0.00	0.00	0.00	0.00	0.00	0.00	0.00	0.00	0.00	0.00	0.00			
180	0.00	0.00	0.00	0.00	0.00	0.00	0.00	0.00	0.00	0.00	0.00	0.00	0.00	0.00	0.00			



**2.4 Performance Assessment:**

Model name	CCT(K)	Total Luminous (lm)	Power (W)	Luminous Efficacy (lm/W)
AOK-26WiE-NV-LV2-00-2770-T302-P	2700K	3447.2	27.14	127.02
AOK-26WiE-NV-LV2-00-3070-T302-P	3000K	3466.6	27.14	127.73
AOK-26WiE-NV-LV2-00-3570-T302-P	3500K	3498.7	27.14	128.91
AOK-26WiE-NV-LV2-00-4070-T302-P	4000K	3530.4	27.14	130.08
AOK-26WiE-NV-LV2-00-4570-T302-P	4500K	3560.7	27.14	131.20
AOK-26WiE-NV-LV2-00-5070-T302-P	5000K	3592.5	27.14	132.37
AOK-26WiE-NV-LV2-00-5770-T302-P	5700K	3612.1	27.14	133.09

According to the test report STDXXXXX

Scaled Methodology Explanation:

- 18W 3000K eff / 18W 2700K eff = 132.02 / 131.29 = 1.0056
- 18W 3500K eff / 18W 2700K eff = 133.24 / 131.29 = 1.0149
- 18W 4000K eff / 18W 2700K eff = 134.45 / 131.29 = 1.0241
- 18W 4500K eff / 18W 2700K eff = 135.61 / 131.29 = 1.0329
- 18W 5000K eff / 18W 2700K eff = 136.82 / 131.29 = 1.0421
- 18W 5700K eff / 18W 2700K eff = 137.56 / 131.29 = 1.0478

- 3000K eff=2700K eff\*1.0056
- 3500K eff=2700K eff\*1.0149
- 4000K eff=2700K eff\*1.0241
- 4500K eff=2700K eff\*1.0329
- 5000K eff=2700K eff\*1.0421
- 5700K eff=2700K eff\*1.0478



### 3. Test Equipment

Equipment ID	Equipment Name	Last Calibration Date	Next Calibration Date
ST-R-714	Goniophotometer system	Verified by D908S standard lamp	
ST-R-710	Standard Lamp	2019-02-12	2020-02-11
ST-R-711	Power Meter for Goniophotometer	2019-01-06	2020-01-05
Uncertainty: Photometric Measurement(Goniophotometer):1.62%			



#### 4. Product Photo



\*\*\*\*\* END OF REPORT \*\*\*\*\*