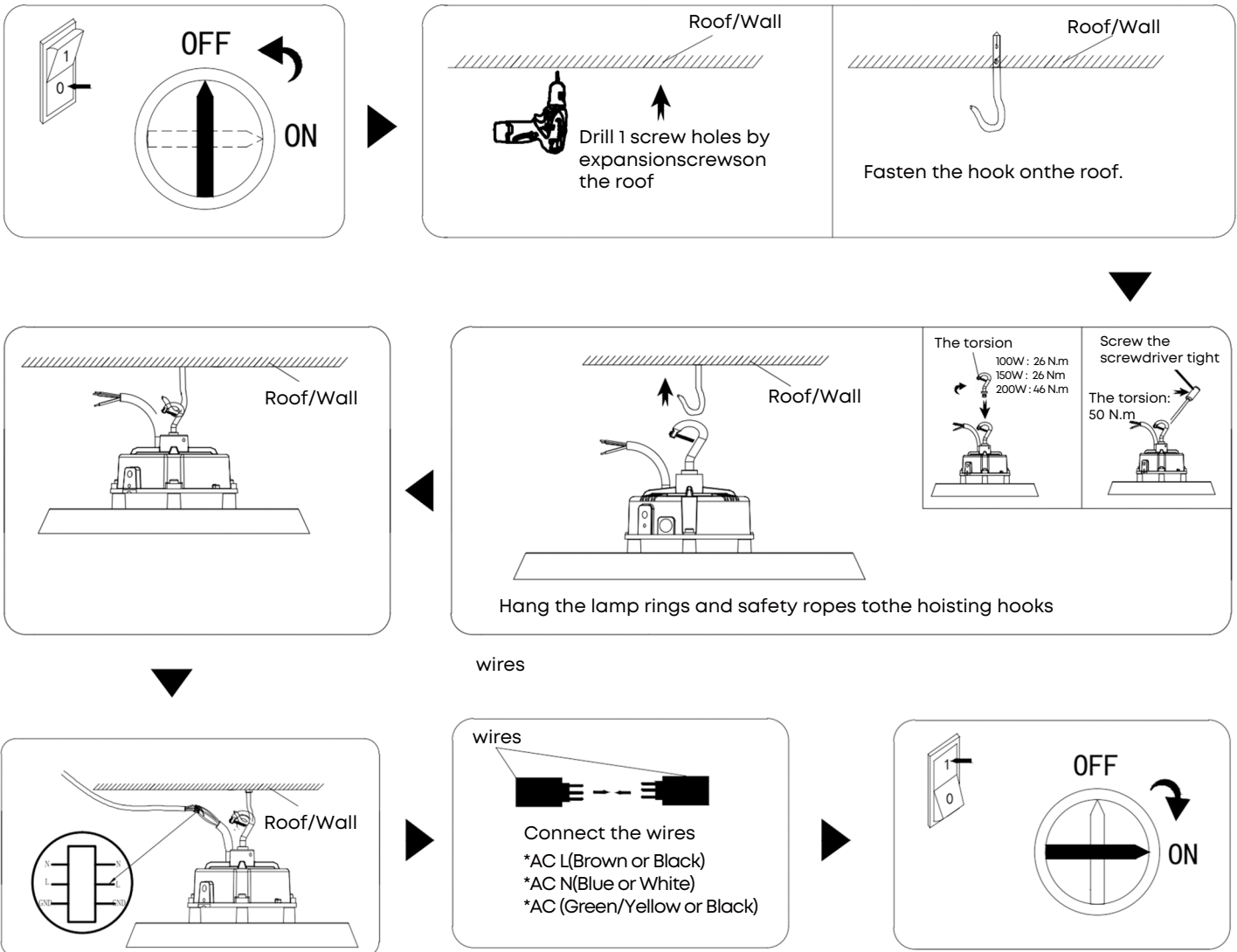


Installation Guide

This procedure is designed as an installation aid. Skilled tradespeople that are familiar with general construction and electrical installation techniques should perform the installation. Licensed electricians should provide electrical installation connections. Installations and connections should be done in accordance with all national and local codes and permits. In no way is this document intended to construe warranty or fitness of use of the products described, nor is it intended to provide safety instruction for those installing the product.

⚠ Caution:
Switch Off the Power Supply New Installation



⚡ WARNING

1. To protect the surface of the fixture from scratch, please handle the package with care during the transportation and storage. Do not place heavy item above the package;
2. Do not let the product surface friction with other hard objects or fall on the floor;
3. Make sure the fixture is securely mounted. The connection of all the wires must have insulation protection;
4. The appropriate waterproof measurements are required when connecting the driver externally;
5. The operating voltage range of this product is between 90VAC to 305VAC (in 50/60Hz). Please do not use the luminaire out of this range.